

# STAR WARS

## SHATTERPOINT

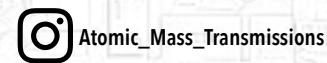
### SWP01 (A)-ANAKIN

#### READ THIS FIRST

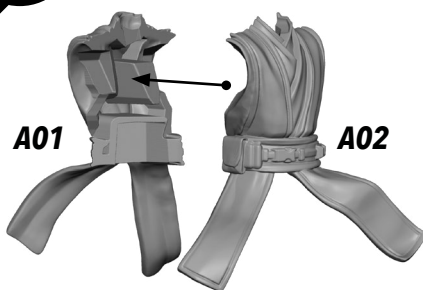
Be sure to use a pair of sharp hobby clippers to remove the miniature components from the sprue. Carefully clean the excess material and mold lines with a sharp hobby knife. Check the fit of each part before gluing. Use a small amount of hobby plastic glue to assemble the components. Use caution with all products and follow all manufacturer instructions. Adult supervision is recommended for children under the age of 16. Have fun!

#### JOIN THE COMMUNITY

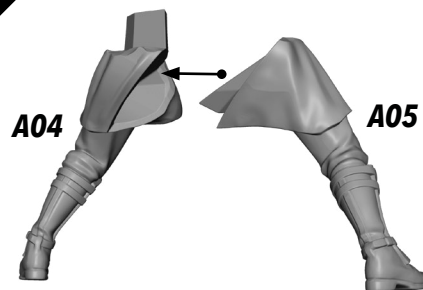
Use [#MyStarWarsLegion](#) to share your miniature photos and be a part of the *Star Wars: Legion* community!



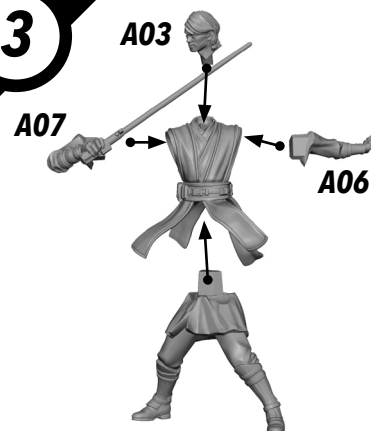
1



2



3



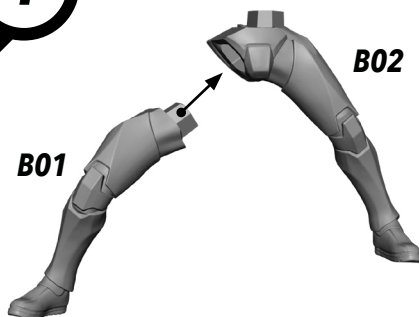
FINAL



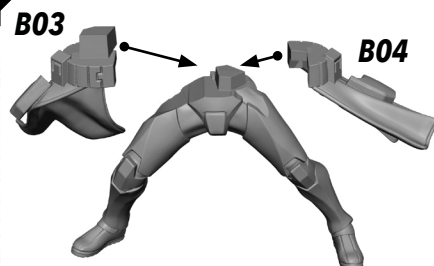
ALL PARTS SHOULD BE ASSEMBLED USING PLASTIC GLUE. PERMISSION GRANTED TO PRINT OR PHOTOCOPY FOR PERSONAL USE.

# SWP01 (B)-REX

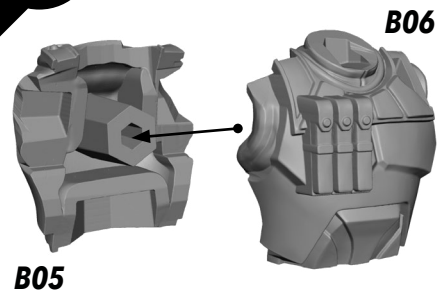
1



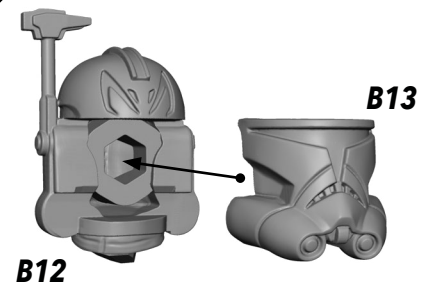
2



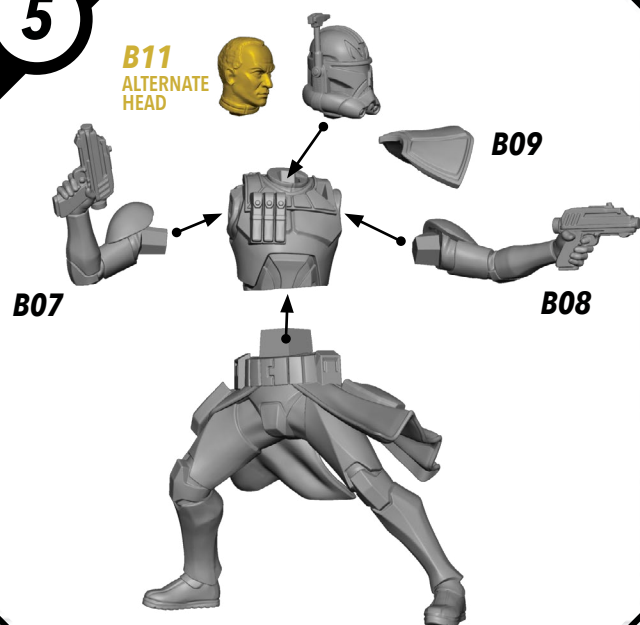
3



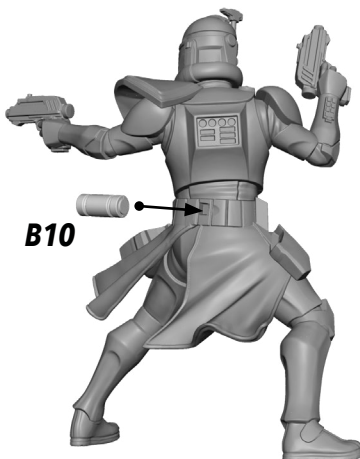
4



5



6



FINAL

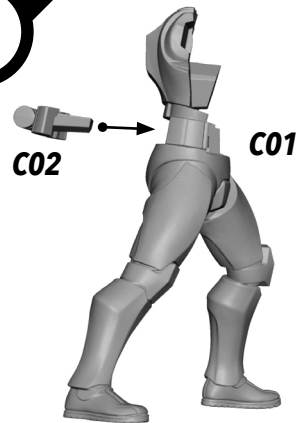


ALL PARTS SHOULD BE ASSEMBLED USING PLASTIC GLUE. PERMISSION GRANTED TO PRINT OR PHOTOCOPY FOR PERSONAL USE.

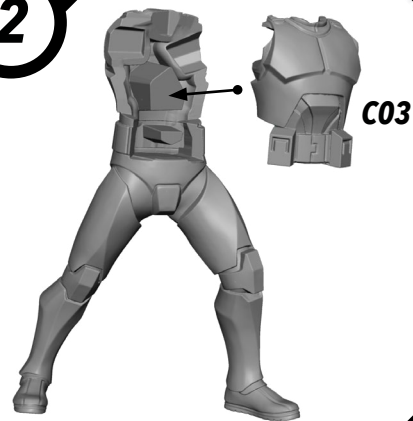


## SWP01 (C)-CLONE TROOPERS (POSE A)

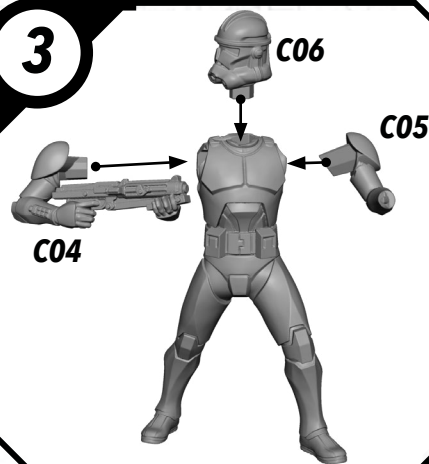
1



2



3

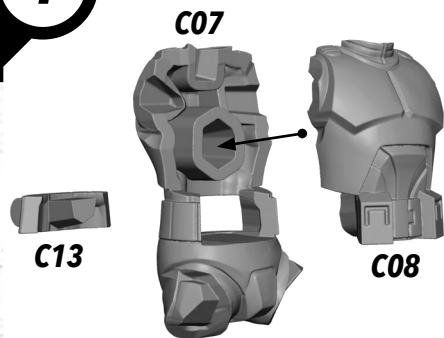


FINAL

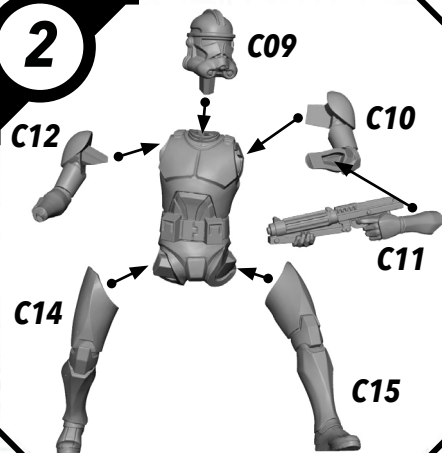


## SWP01 (C)-CLONE TROOPER (POSE B)

1



2



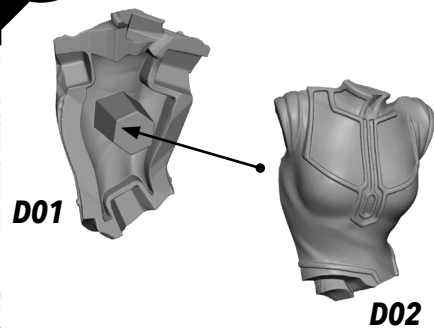
FINAL



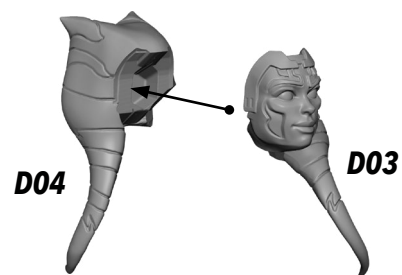
ALL PARTS SHOULD BE ASSEMBLED USING PLASTIC GLUE. PERMISSION GRANTED TO PRINT OR PHOTOCOPY FOR PERSONAL USE.

# SWP01 (D)-AHSOKA

1



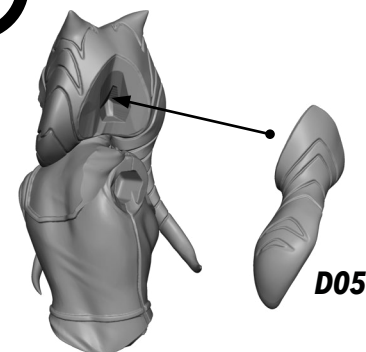
2



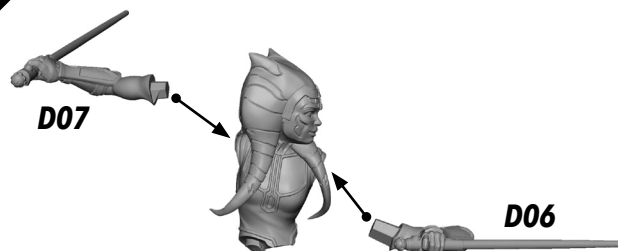
3



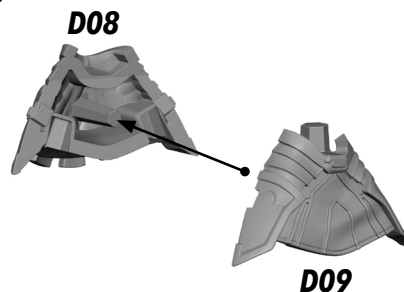
4



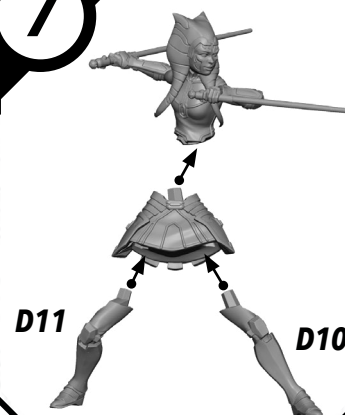
5



6



7



FINAL

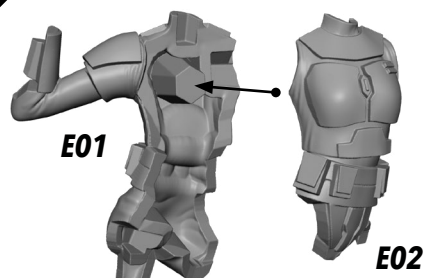


ALL PARTS SHOULD BE ASSEMBLED USING PLASTIC GLUE. PERMISSION GRANTED TO PRINT OR PHOTOCOPY FOR PERSONAL USE.

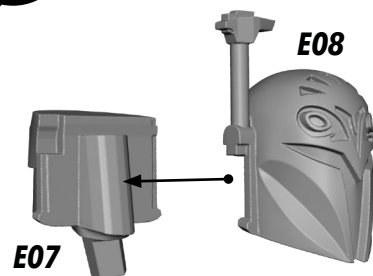


# SWP01 (E)-BO KATAN

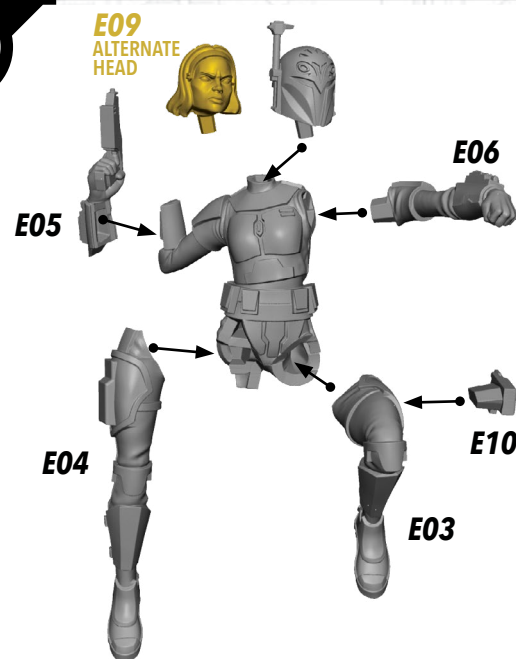
1



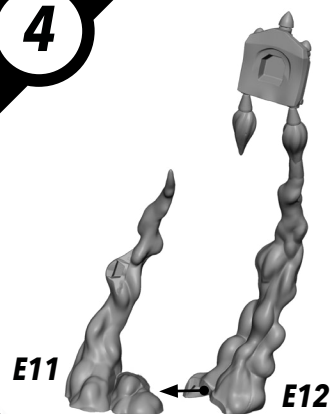
2



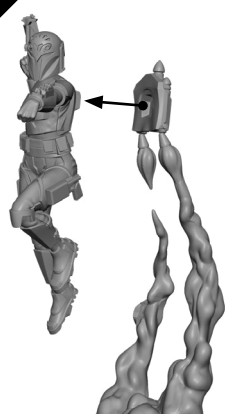
3



4



5



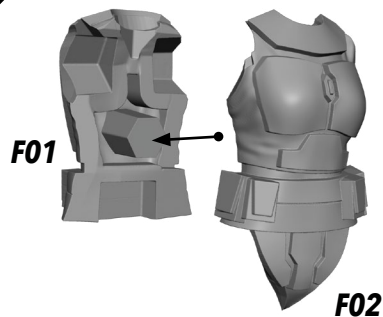
FINAL



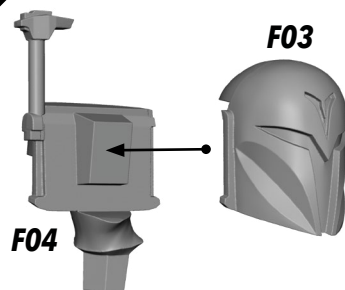
ALL PARTS SHOULD BE ASSEMBLED USING PLASTIC GLUE. PERMISSION GRANTED TO PRINT OR PHOTOCOPY FOR PERSONAL USE.

# SWP01 (F)-NITE OWLS (FEMALE)

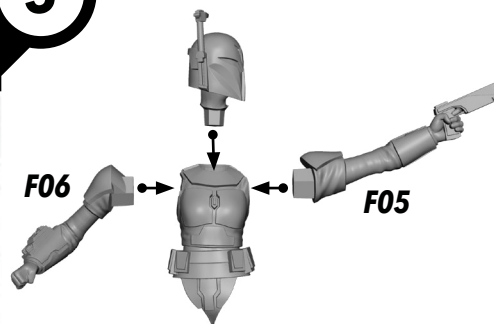
1



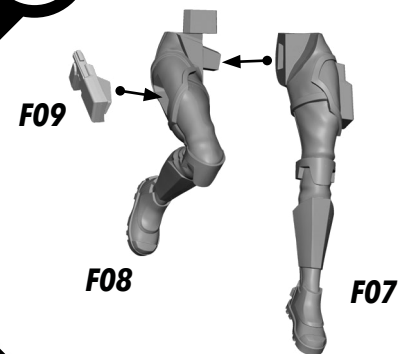
2



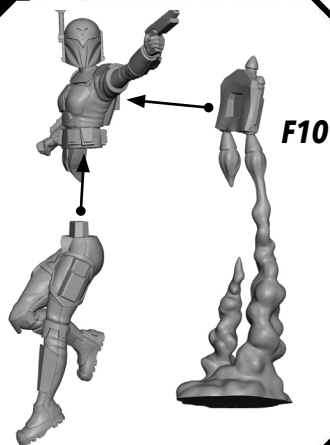
3



4



5



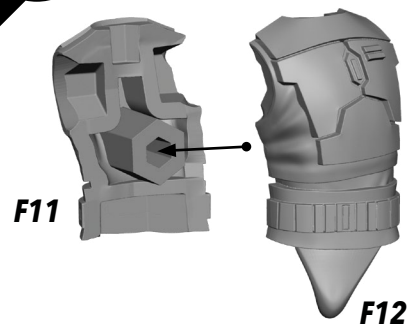
FINAL



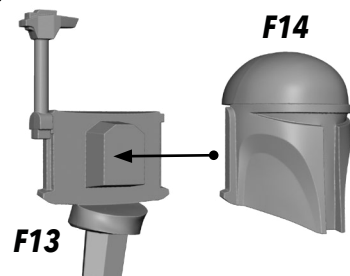
ALL PARTS SHOULD BE ASSEMBLED USING PLASTIC GLUE. PERMISSION GRANTED TO PRINT OR PHOTOCOPY FOR PERSONAL USE.

# SWP01 (F)-NITE OWLS (MALE)

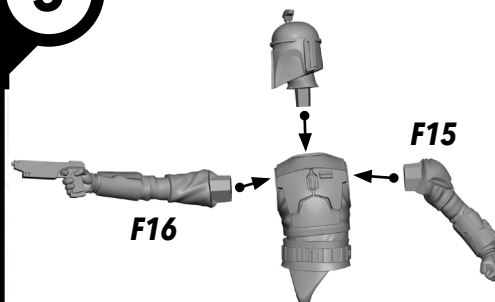
1



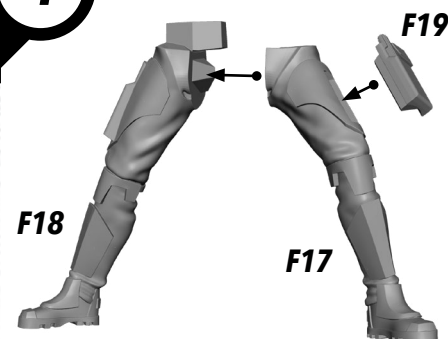
2



3



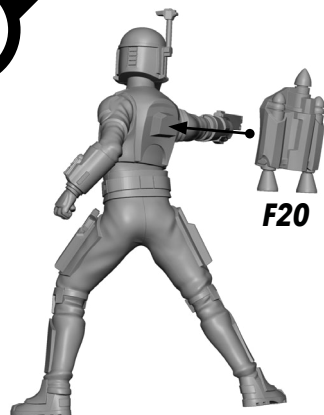
4



5



6



FINAL

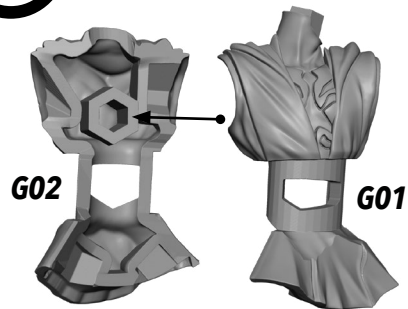


ALL PARTS SHOULD BE ASSEMBLED USING PLASTIC GLUE. PERMISSION GRANTED TO PRINT OR PHOTOCOPY FOR PERSONAL USE.

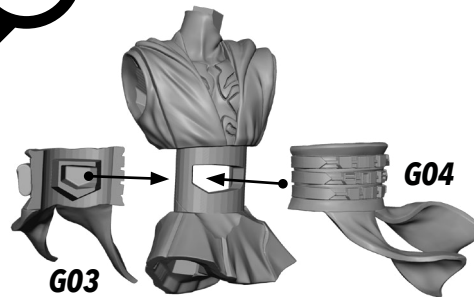


# SWP01 (G)-DARTH MAUL

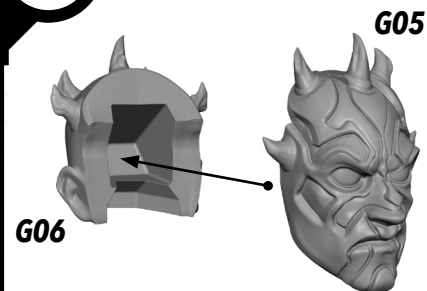
1



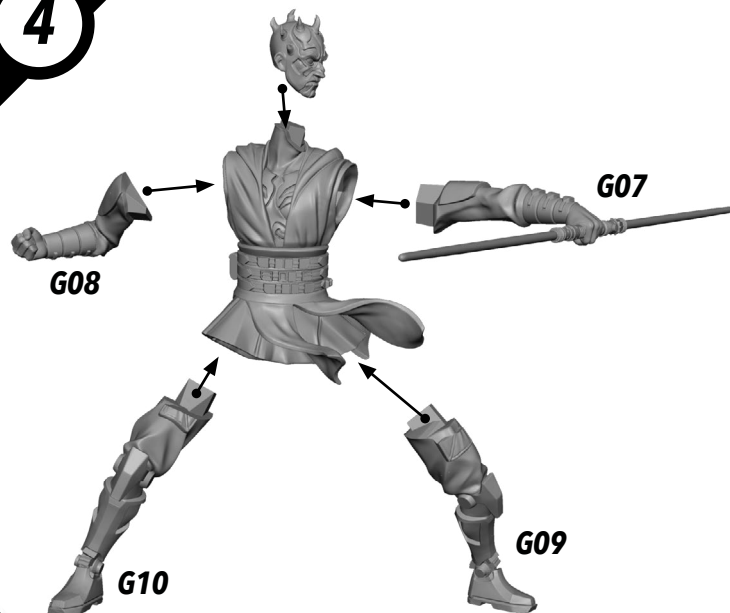
2



3



4



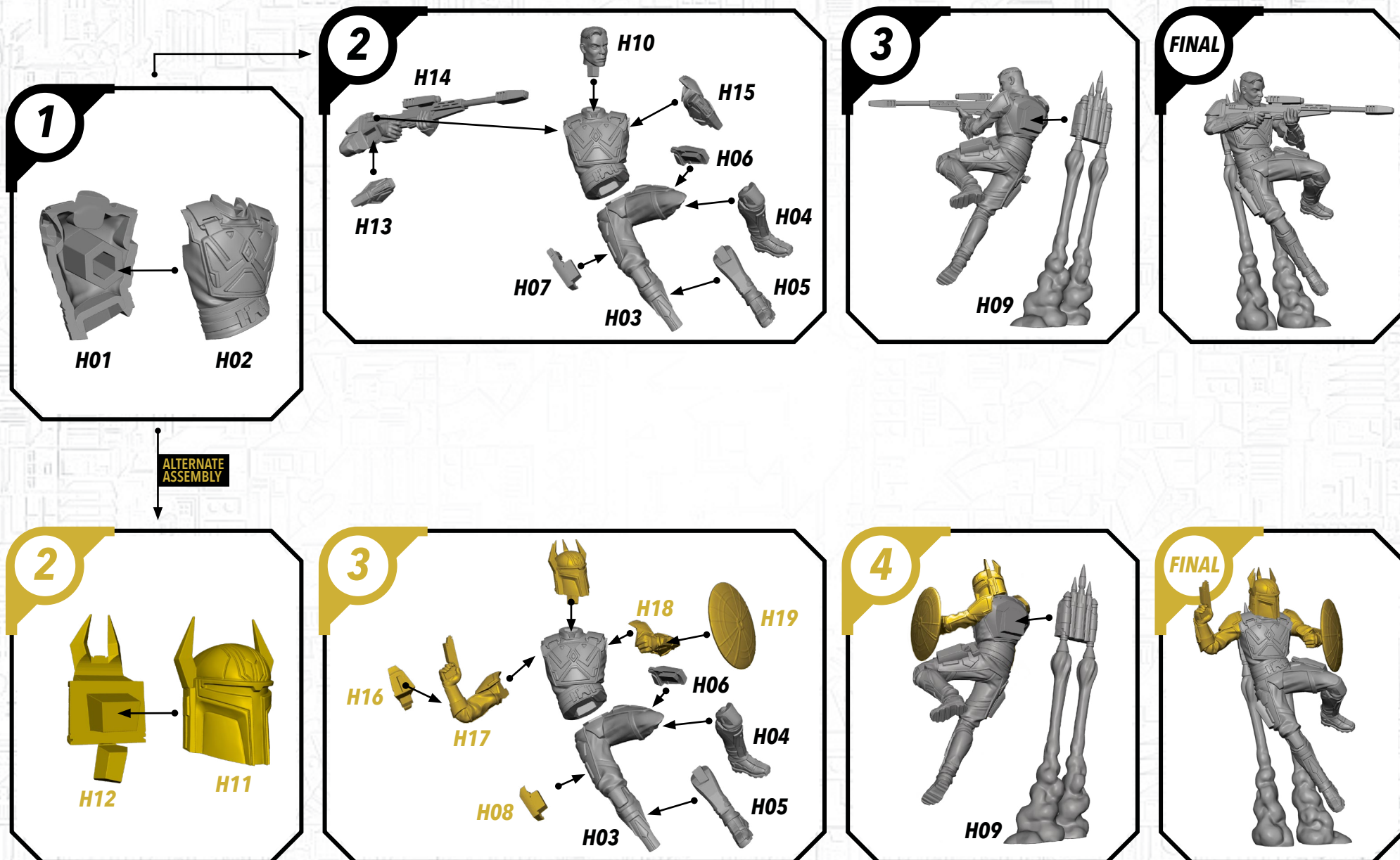
FINAL



ALL PARTS SHOULD BE ASSEMBLED USING PLASTIC GLUE. PERMISSION GRANTED TO PRINT OR PHOTOCOPY FOR PERSONAL USE.



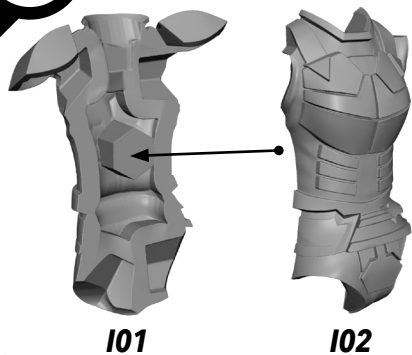
# SWP01 (H)-GAR SAXON



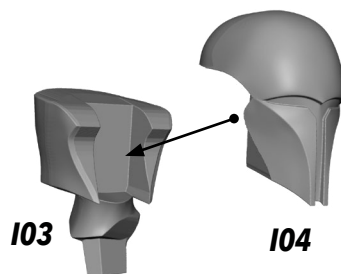
ALL PARTS SHOULD BE ASSEMBLED USING PLASTIC GLUE. PERMISSION GRANTED TO PRINT OR PHOTOCOPY FOR PERSONAL USE.

# SWP01 (I)-SUPER COMMANDOS (FEMALE)

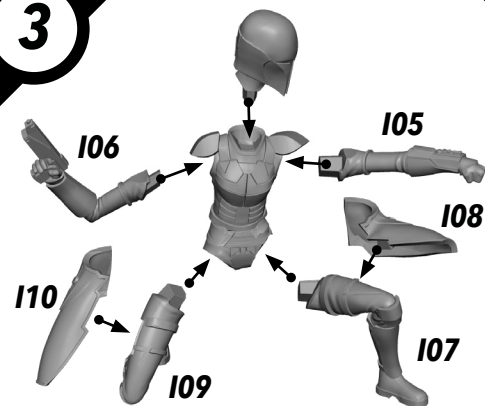
1



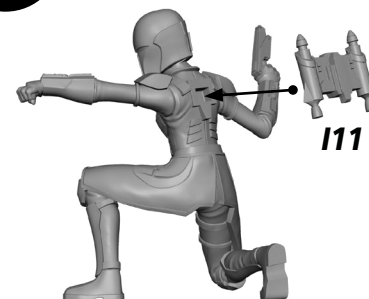
2



3



4



FINAL

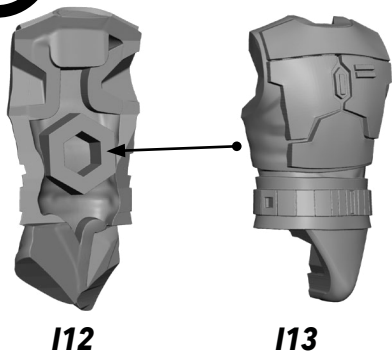


ALL PARTS SHOULD BE ASSEMBLED USING PLASTIC GLUE. PERMISSION GRANTED TO PRINT OR PHOTOCOPY FOR PERSONAL USE.

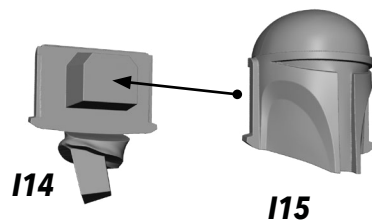


# SWP01 (I)-SUPER COMMANDOS (MALE)

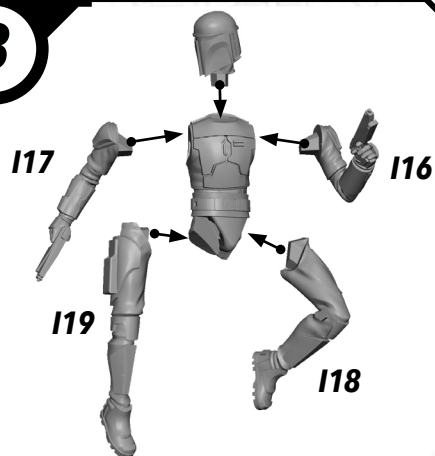
1



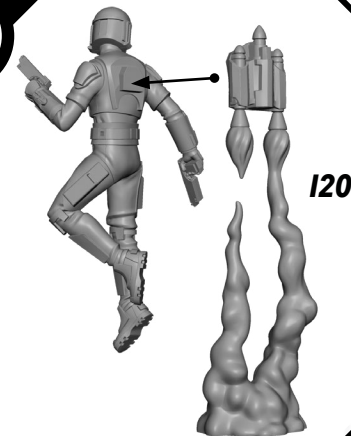
2



3



4



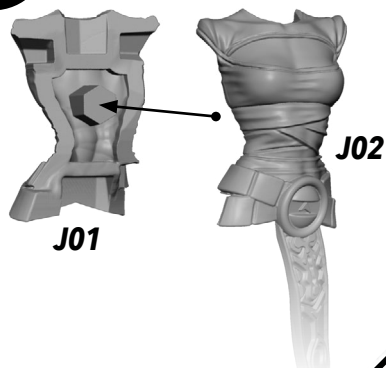
FINAL



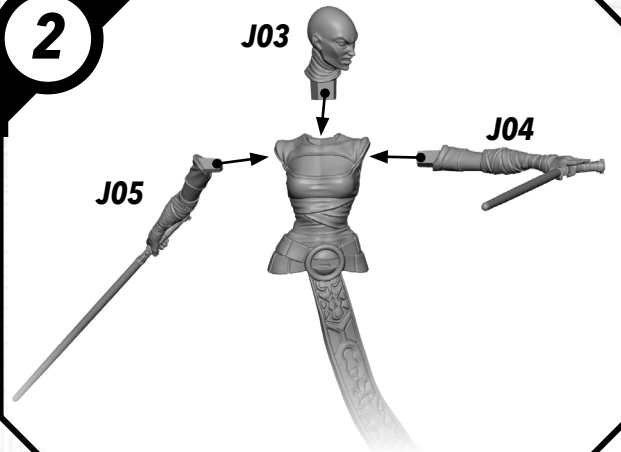
ALL PARTS SHOULD BE ASSEMBLED USING PLASTIC GLUE. PERMISSION GRANTED TO PRINT OR PHOTOCOPY FOR PERSONAL USE.

# SWP01 (J)-ASAJJ VENTRESS

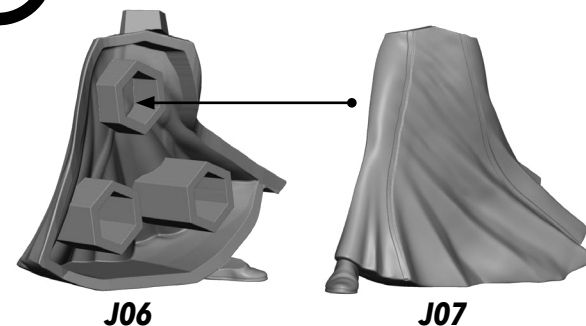
1



2



3



4



FINAL

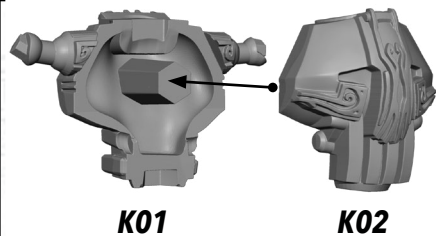


ALL PARTS SHOULD BE ASSEMBLED USING PLASTIC GLUE. PERMISSION GRANTED TO PRINT OR PHOTOCOPY FOR PERSONAL USE.

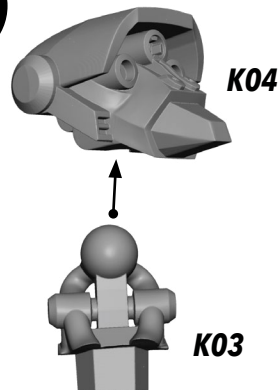


# SWP01 (K)-KALANI

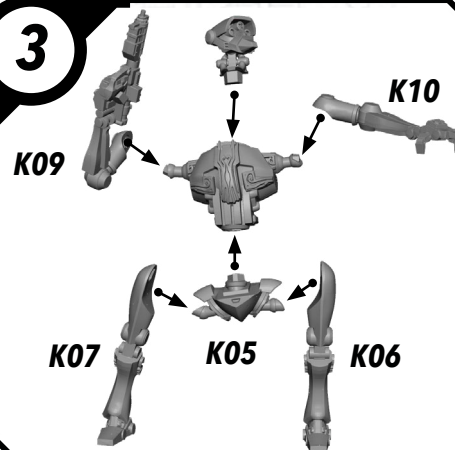
1



2



3

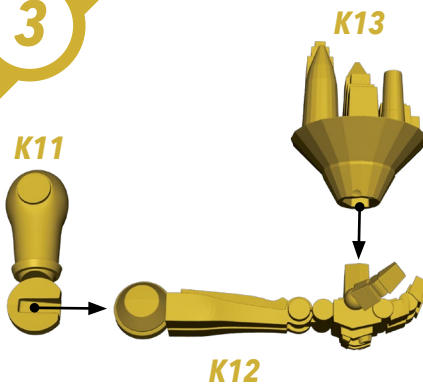


FINAL

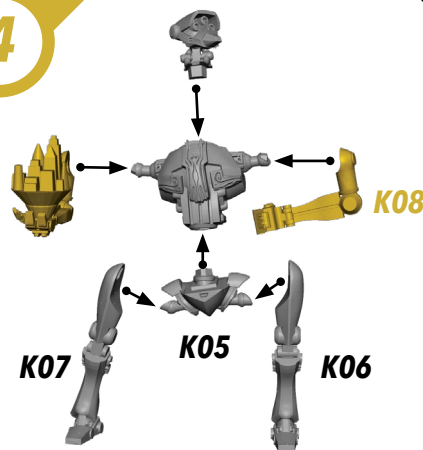


ALTERNATE  
ASSEMBLY

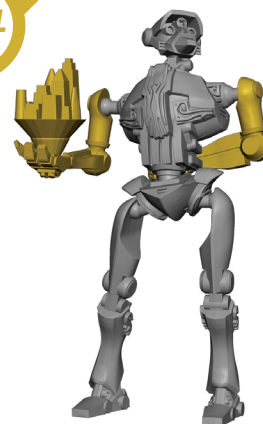
3



4

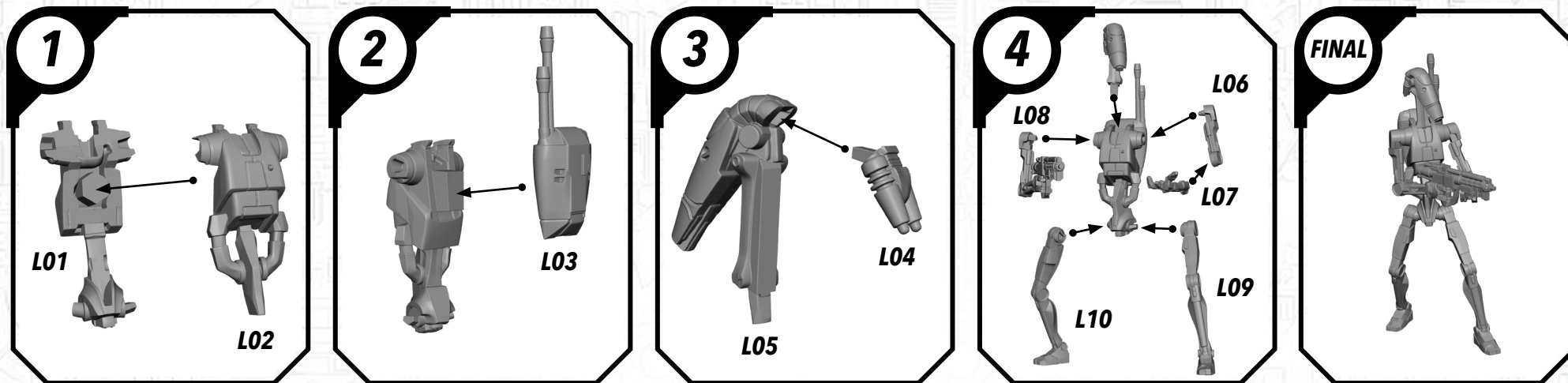


FINAL

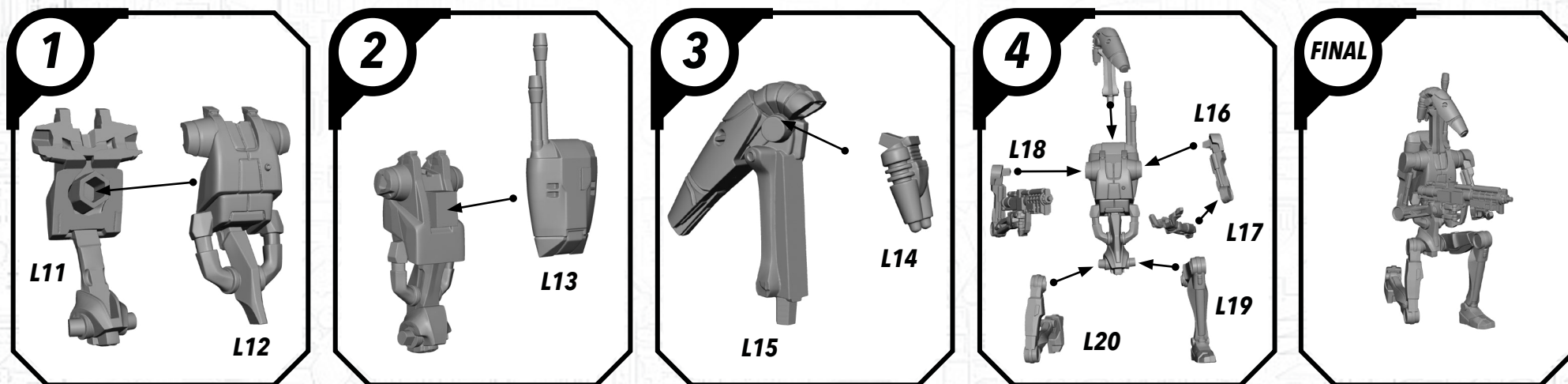


ALL PARTS SHOULD BE ASSEMBLED USING PLASTIC GLUE. PERMISSION GRANTED TO PRINT OR PHOTOCOPY FOR PERSONAL USE.

## SWP01 (L)-B1 BATTLE DROIDS (A)



## SWP01 (L)-B1 BATTLE DROIDS (B)

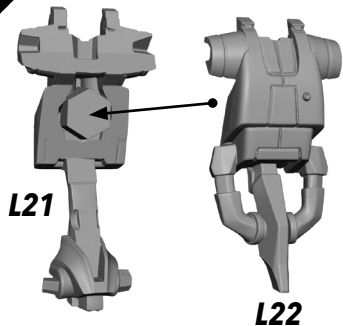


ALL PARTS SHOULD BE ASSEMBLED USING PLASTIC GLUE. PERMISSION GRANTED TO PRINT OR PHOTOCOPY FOR PERSONAL USE.

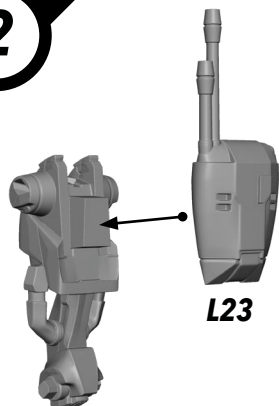


## SWP01 (L)-B1 BATTLE DROIDS (C)

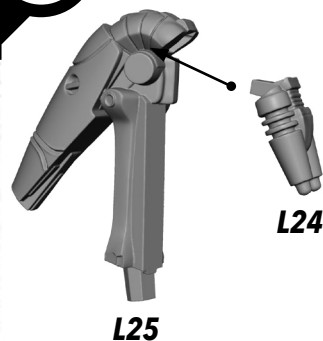
1



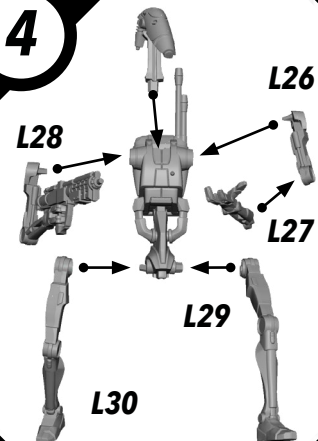
2



3



4



FINAL



## SWP01 (L)-BATTLE DROIDS FINAL ASSEMBLY

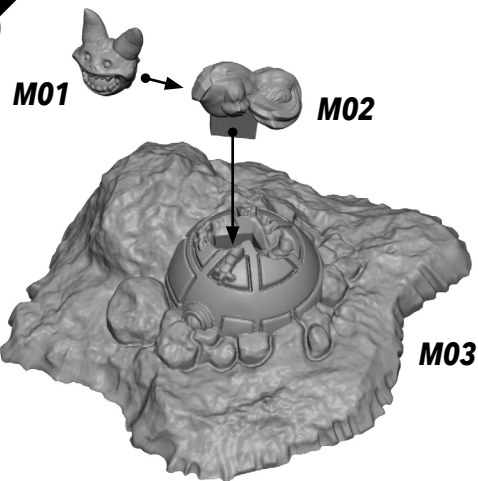
FINAL



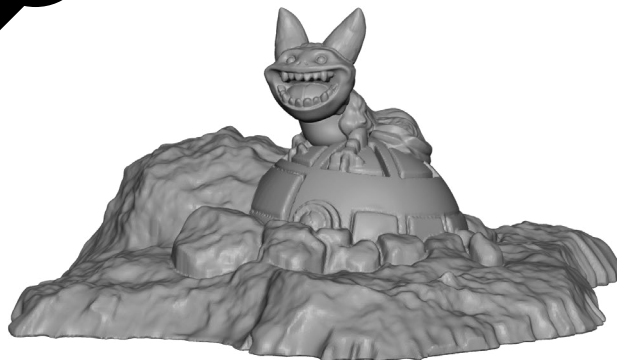
ALL PARTS SHOULD BE ASSEMBLED USING PLASTIC GLUE. PERMISSION GRANTED TO PRINT OR PHOTOCOPY FOR PERSONAL USE.

# SWP01 (M)-TOOKA

1



FINAL

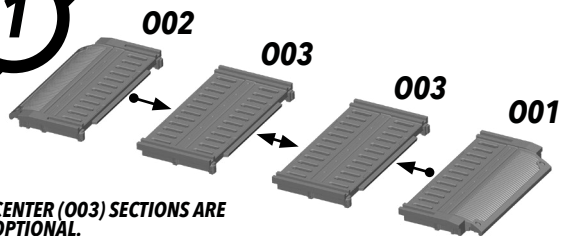


ALL PARTS SHOULD BE ASSEMBLED USING PLASTIC GLUE. PERMISSION GRANTED TO PRINT OR PHOTOCOPY FOR PERSONAL USE.



# SWP01 (0)-GANTRIES

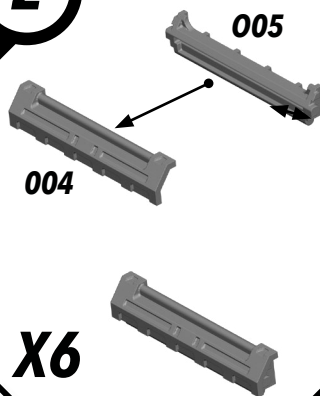
1



CENTER (003) SECTIONS ARE  
OPTIONAL.  
MAY ALSO USE ANY NUMBER OF  
CENTER SECTIONS.

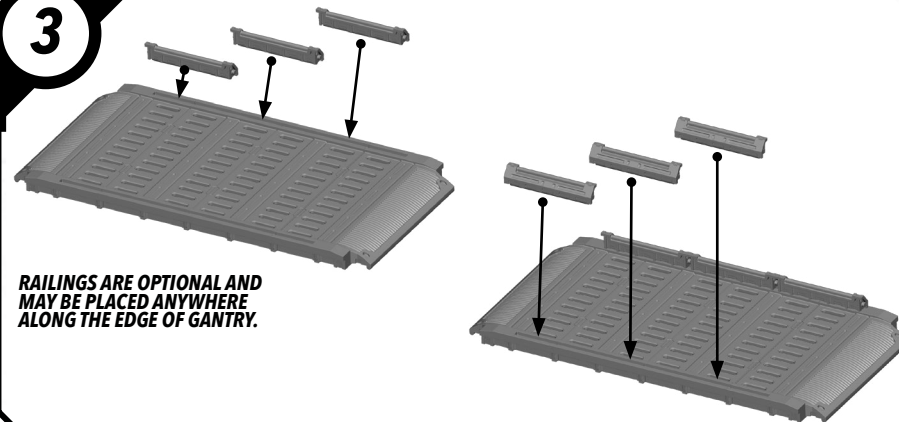
ASSEMBLY WITH BOTH SECTIONS.

2



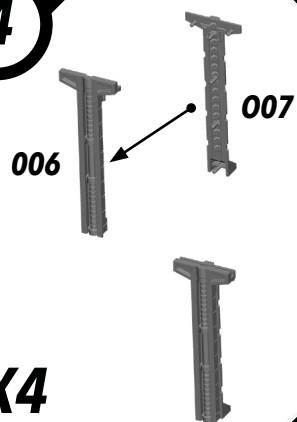
X6

3



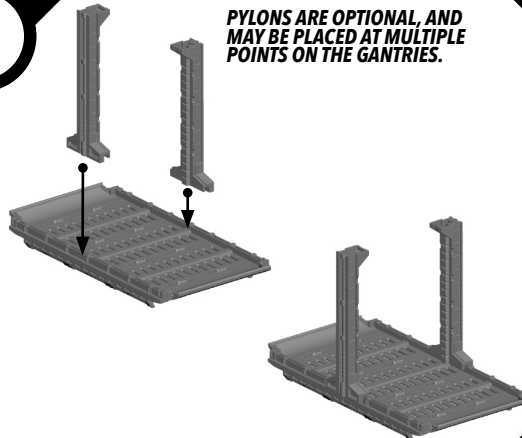
RAILINGS ARE OPTIONAL AND  
MAY BE PLACED ANYWHERE  
ALONG THE EDGE OF GANTRY.

4



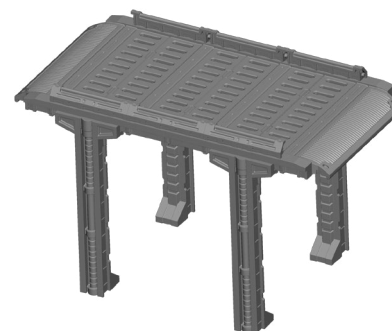
X4

5



PYLONS ARE OPTIONAL, AND  
MAY BE PLACED AT MULTIPLE  
POINTS ON THE GANTRIES.

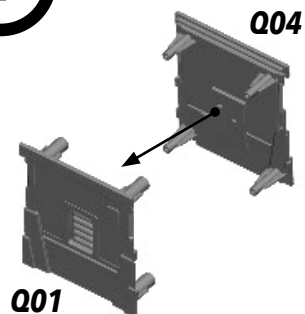
FINAL



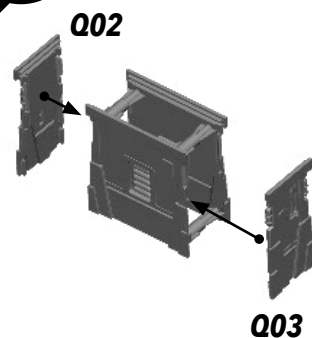
ALL PARTS SHOULD BE ASSEMBLED USING PLASTIC GLUE. PERMISSION GRANTED TO PRINT OR PHOTOCOPY FOR PERSONAL USE.

# SWP01 (Q)-TOWER

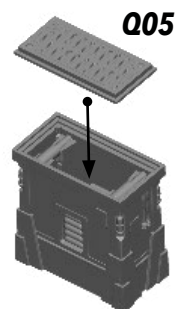
1



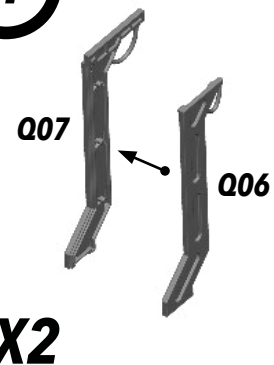
2



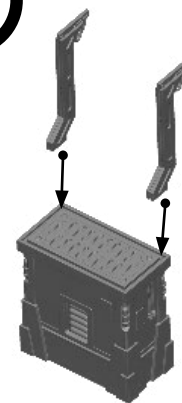
3



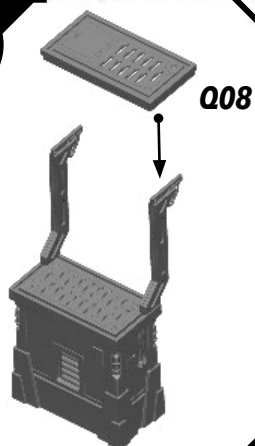
4



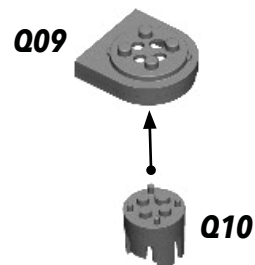
5



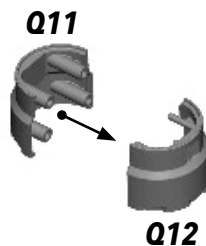
6



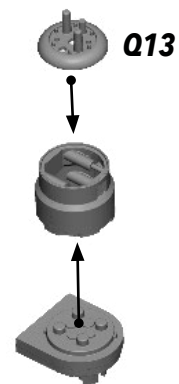
7



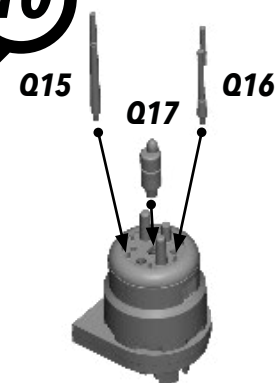
8



9



10

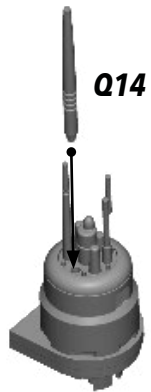


ALL PARTS SHOULD BE ASSEMBLED USING PLASTIC GLUE. PERMISSION GRANTED TO PRINT OR PHOTOCOPY FOR PERSONAL USE.

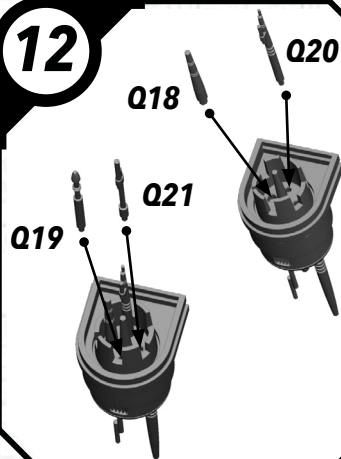


## SWP01 (Q)-TOWER (CONT.)

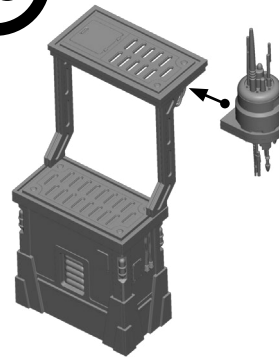
11



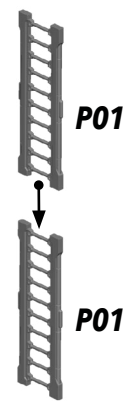
12



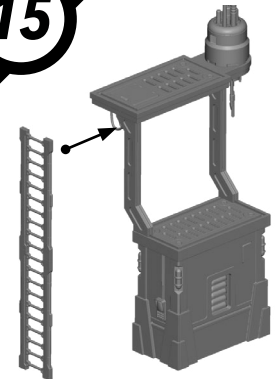
13



14

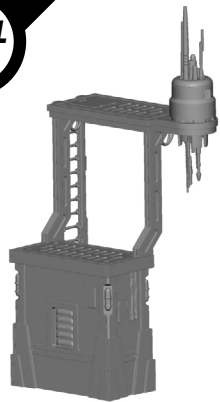


15

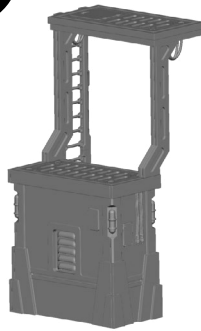


## SWP01 (Q)-TOWER (ASSEMBLY OPTIONS)

FINAL  
1



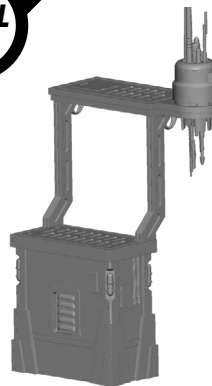
FINAL  
2



FINAL  
3



FINAL  
4

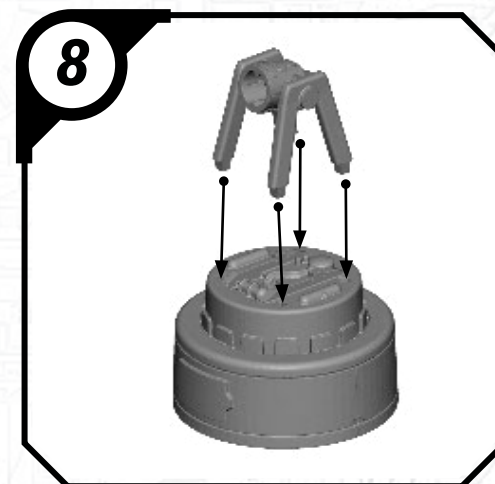
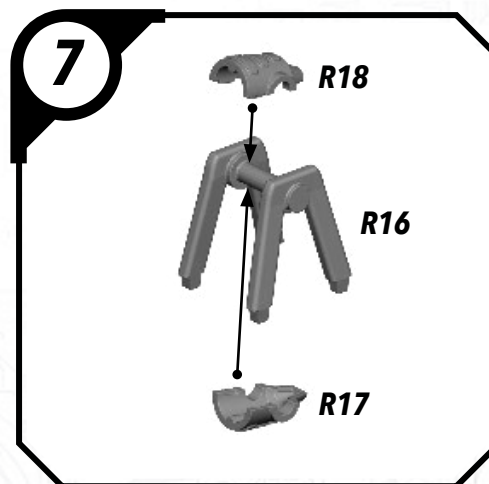
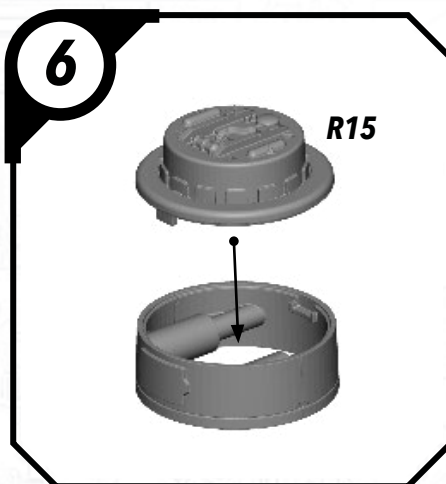
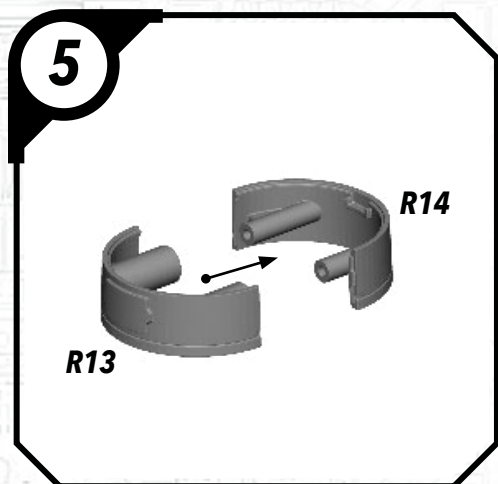
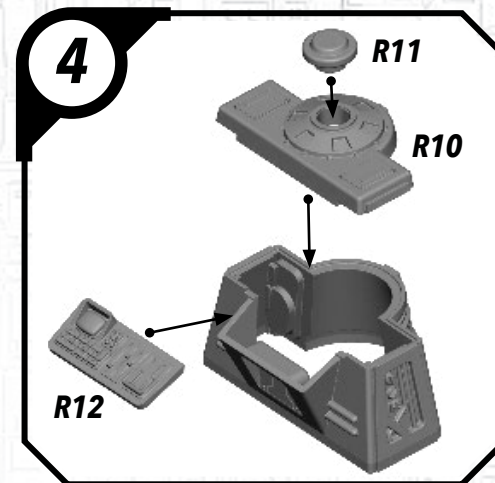
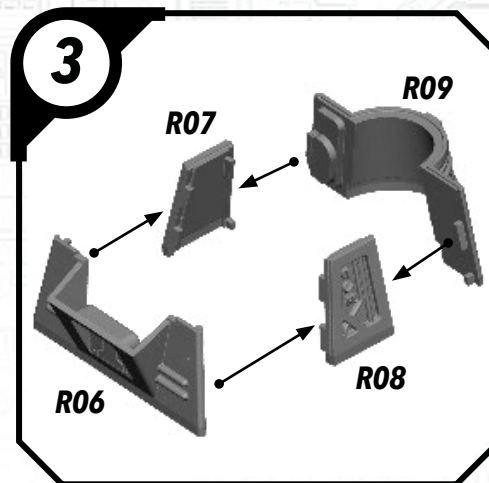
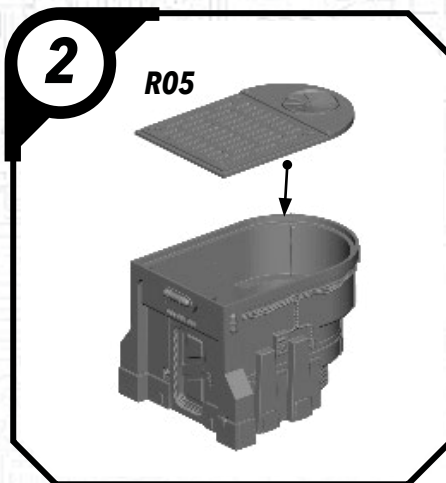
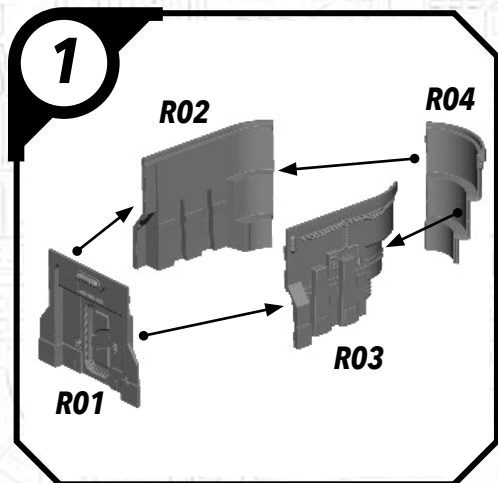


FINAL  
5



ALL PARTS SHOULD BE ASSEMBLED USING PLASTIC GLUE. PERMISSION GRANTED TO PRINT OR PHOTOCOPY FOR PERSONAL USE.

# SWP01 (R)-TECH SHED

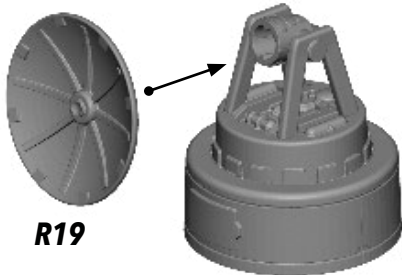


ALL PARTS SHOULD BE ASSEMBLED USING PLASTIC GLUE. PERMISSION GRANTED TO PRINT OR PHOTOCOPY FOR PERSONAL USE.



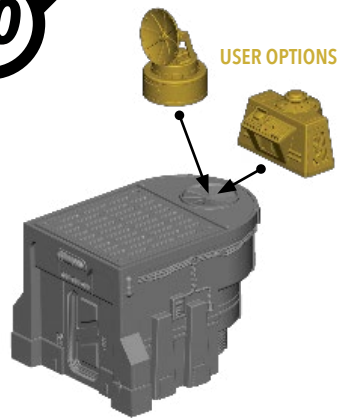
## SWP01 (R)-TECH SHED (CONT.)

9



R19

10



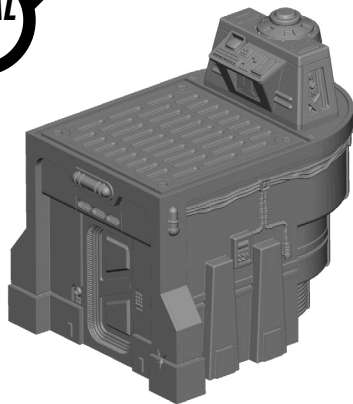
USER OPTIONS

## SWP01 (R)-ASSEMBLY OPTIONS

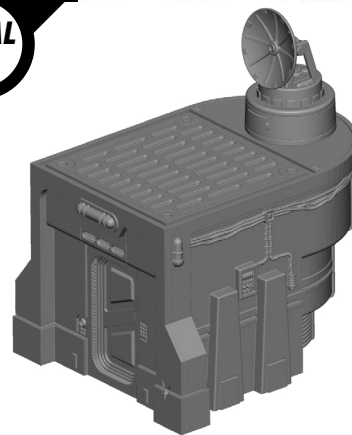
FINAL  
1



FINAL  
2



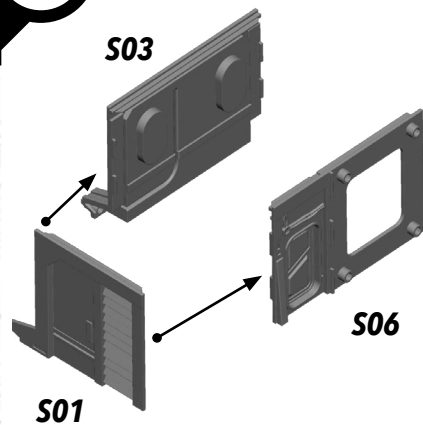
FINAL  
3



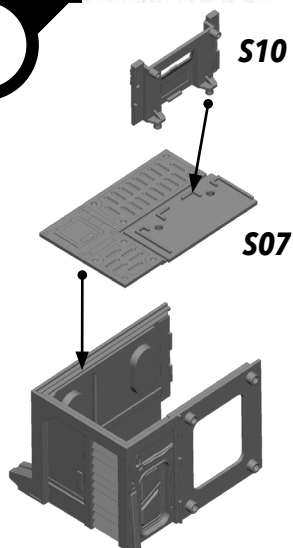
ALL PARTS SHOULD BE ASSEMBLED USING PLASTIC GLUE. PERMISSION GRANTED TO PRINT OR PHOTOCOPY FOR PERSONAL USE.

# SWP01 (S) VENT BUILDING

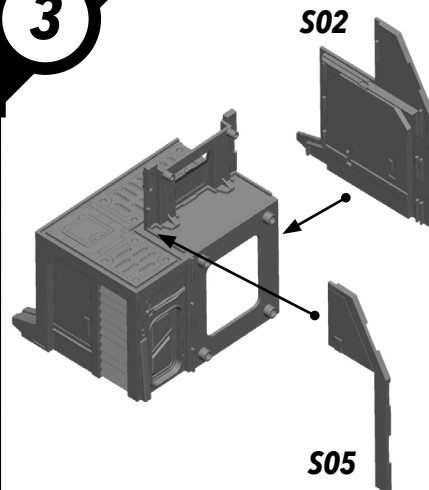
1



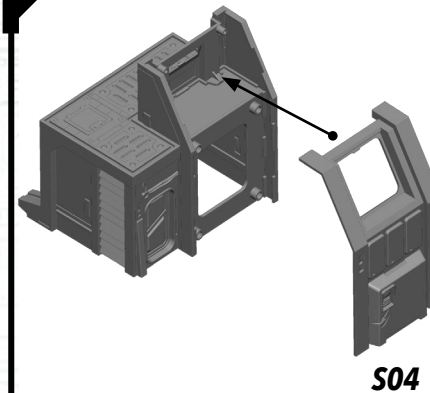
2



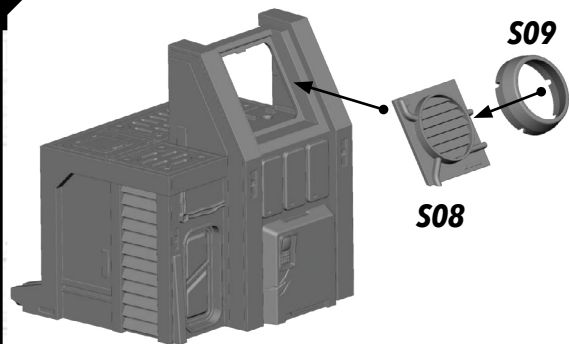
3



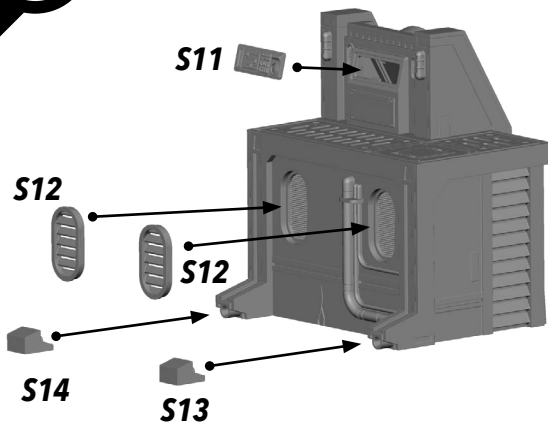
4



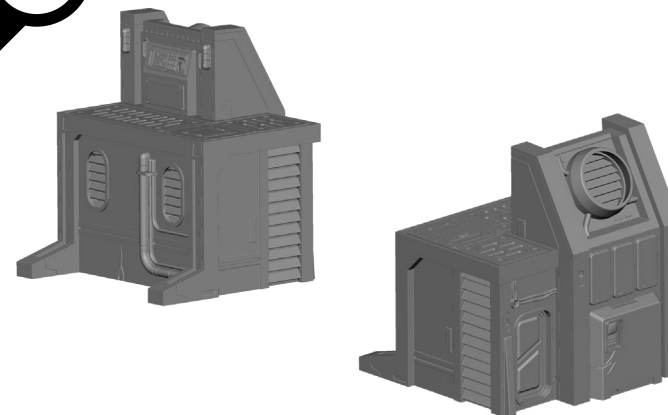
5



6



FINAL

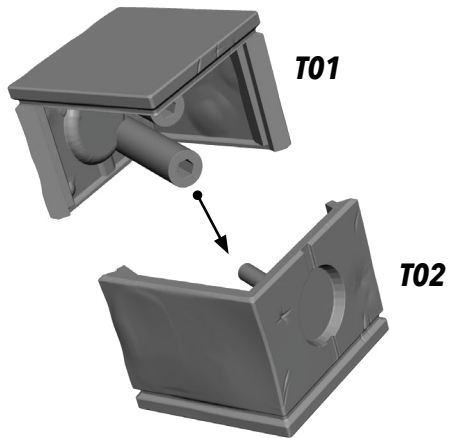


ALL PARTS SHOULD BE ASSEMBLED USING PLASTIC GLUE. PERMISSION GRANTED TO PRINT OR PHOTOCOPY FOR PERSONAL USE.



# SWP01 (T) CRATE

1



FINAL



ALL PARTS SHOULD BE ASSEMBLED USING PLASTIC GLUE. PERMISSION GRANTED TO PRINT OR PHOTOCOPY FOR PERSONAL USE.